

ASSESSMENT DATA

Keyport Public Schools

October 15, 2014

Keyport Administrative Team

Lisa M. Savoia

Melissa Jones

Anthony DePasquale

Denise Cleveland

Michael Waters

Erik Mammano

Anthony Rapolla

Kevin Flynn

Laura Godlesky

Stephen Slater

Superintendent

Director of Curriculum & Instruction

Director of Guidance

Director of Pupil Personnel Services

Principal Keyport High School

Vice Principal Keyport High School

Principal Central School

Vice Principal Central School

Supervisor of Language Arts

Supervisor of Math, Business, and
Assessment

OVERVIEW OF PRESENTATION

- DRA Growth
- NJ ASK
- HSPA
- AP
- PARCC
- District Goals



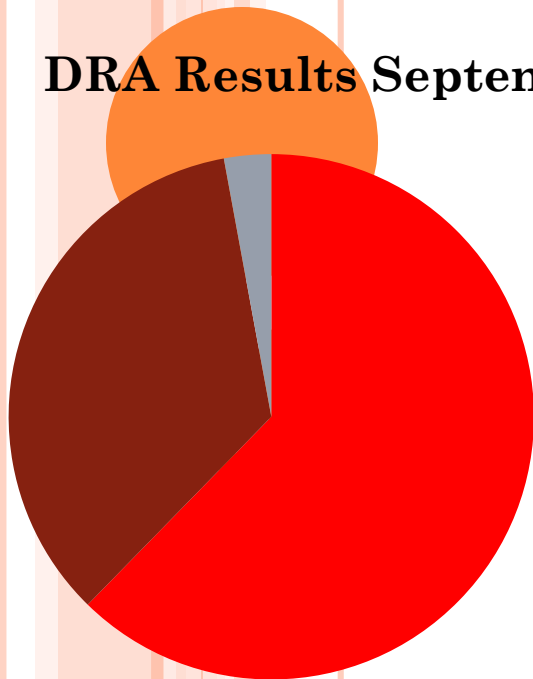
First Grade Reading Growth 2013-2014 School Year

Partially Proficient: 35% down to 7%

Proficient: 62% to 35%

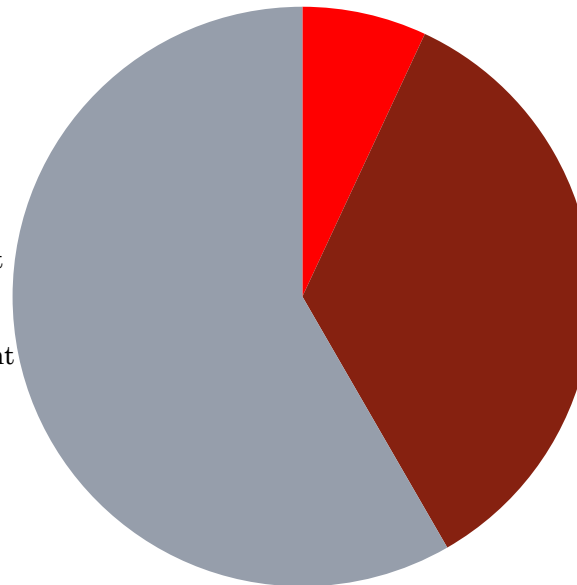
Advanced Proficient: 3% up to 58%

DRA Results September 2013



■ Partially Proficient
■ Proficient
■ Advanced Proficient

DRA Results June 2014



■ Partially Proficient
■ Proficient
■ Advanced Proficient

NJ ASK ELA 2014

TOTAL POPULATION PROFICIENCY RATES

		Keyport	DFG	NJ
Grade 3	ELA	60.5%	59%	65%
Grade 4	ELA	59.4%	52%	60%
Grade 5	ELA	57.5%	54%	62%
Grade 6	ELA	54%	59%	67%
Grade 7	ELA	62.5%	56%	64%
Grade 8	ELA	85.7%	76%	80%



2013-2014 ELA COMPARISON

2013 ELA Grade and Score	2014 ELA Grade and Score	RESULT
3 rd Grade 69%	4 th Grade 59.4%	Down 10%
4 th Grade 57%	5 th Grade 57.5%	Up .5%
5 th Grade 55%	6 th Grade 54%	Down 1%
6 th Grade 65%	7 th Grade 62.5%	Down 2.5%
7 th Grade 66%	8 th Grade 85.7%	Up almost 20%

While the name of the test remained the same, thus *Apples to Apples*, the content of the tests changed with regard to shifting all tests to the Common Core.

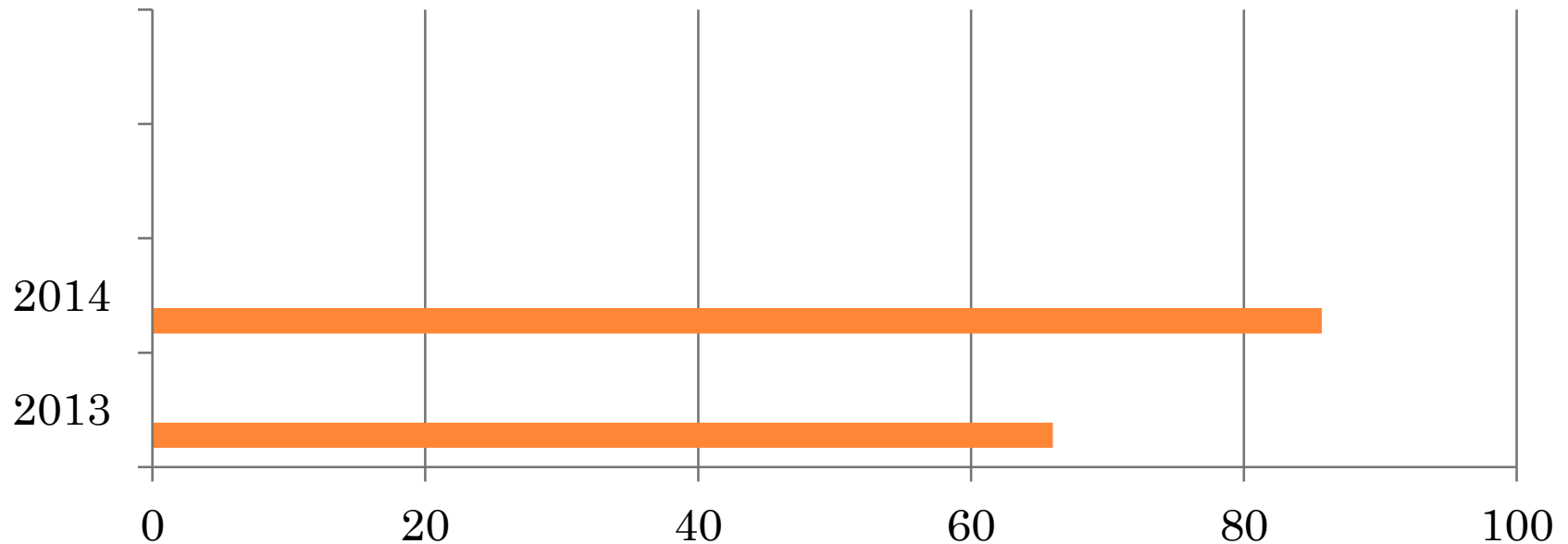
STUDENTS WHO IMPROVED 15 OR MORE POINTS ON THE ELA SECTION

2013 – 2014 in ELA Total Score

From 3 rd to 4 th Grade	11.5%
From 4 th to 5 th Grade	12.5%
From 5 th to 6 th Grade	20.7%
From 6 th to 7 th Grade	26.8%
From 7 th to 8 th Grade	30.8%



NJ ASK ELA COMPARISON FROM 7TH TO 8TH GRADE (CURRENT 9TH GRADERS)



Students in 8th grade in the spring of 2014 increased in proficiency on the Language Arts section of the NJ ASK by almost 20%



8TH GRADE NJ ASK

- Grade 8 ELA 85.7%
- Grade 8 Math 78.6%

30.8 % of the 8th grade class improved 15 or more points on the ELA NJ ASK 7 to the ELA NJ ASK 8

33.3% of the 8th grade class improved 15 or more points on the MATH NJ ASK 7 to the MATH NJ ASK 8



HIGHLIGHTS IN ELA

- Percentage of Advanced Proficient students

Grade	AP
5th	3.5%
6th	1.5%
7th	18.7%
8th	11.9%



NJ ASK MATH 3-5

- Operations and Algebraic Thinking
- Numbers and Operations in Base Ten
- Numbers and Operations in Fractions
- Measurement and Data
- Geometry



NJ ASK MATH 6-8

- The Number System
- Ratios and Proportional Relationships
- Expressions and Equations
- Functions
- Geometry
- Statistics and Probability



NJ ASK MATH 2014

TOTAL POPULATION PROFICIENCY RATES

	Keyport	DFG	NJ
○ Grade 3 Math	71%	71%	75%
○ Grade 4 Math	54%	69%	75%
○ Grade 5 Math	89%	77%	80%
○ Grade 6 Math	79%	76%	79%
○ Grade 7 Math	78%	61%	67%
○ Grade 8 Math	79%	65%	71%



2013-2014 MATH COMPARISON

2013 Math grade and Score	2014 Math and Score	RESULT
3 rd Grade 76%	4 th Grade 54.3%	Down almost 20%
4 th Grade 72%	5 th Grade 89%	Up 17%
5 th Grade 83%	6 th Grade 79.4%	Down 4%
6 th Grade 85%	7 th Grade 77.8%	Down 8%
7 th Grade 77%	8 th Grade 78.6%	Up 1.6%



PERCENTAGE OF STUDENTS INCREASING 15 POINTS OR MORE ON NJ ASK MATH

2013 – 2014 Math Total Score

From 3 rd to 4 th Grade	11.1%
From 4 th to 5 th Grade	34.7%
From 5 th to 6 th Grade	20.7%
From 6 th to 7 th Grade	8.9%
From 7 th to 8 th Grade	33.3%



NJASK MATH PERFECT SCORES

20 students in Keyport Central School achieved a perfect 300 on the math section of last year's NJ ASK

- 3rd Grade had 8
- 5th Grade had 1
- 6th Grade had 3
- 7th Grade had 6
- 8th Grade had 2



HIGHLIGHTS IN MATHEMATICS

- Current 6th grade class increased 17% from NJASK4 (72% pass rate) to NJASK5 (89% pass rate)
- 5th grade math scores increased from 82% to 83% to 89% pass rate on NJASK over the last three years
- 8th grade math scores increased from 58% to 70% to 78.6% pass rate on NJASK over the last three years



2014 TOTAL POPULATION PROFICIENCY RATES SCIENCE

- Grade 4 Science – 88.2%
- Grade 8 Science - 86%



ELA NEXT STEPS...

- Added ESL teacher to 3rd grade
- Hired HQ ELA 4th grade teacher
- Moved to online assessments utilizing LinkIt and Google
- Teachers are implementing PARCC like assessments
- STAR Assessments for ELA and Math in K-3, to assist with progress monitoring
- Researching RTI model to build stronger foundational skills
- 6th – 8th Pearson Essay Scorer
- Implemented Springboard for Honors 8th grade ELA
- Teachers attending After-School PD Academy
- Teachers volunteering for in-class Writers' Workshop Demo Lessons



MATH NEXT STEPS...

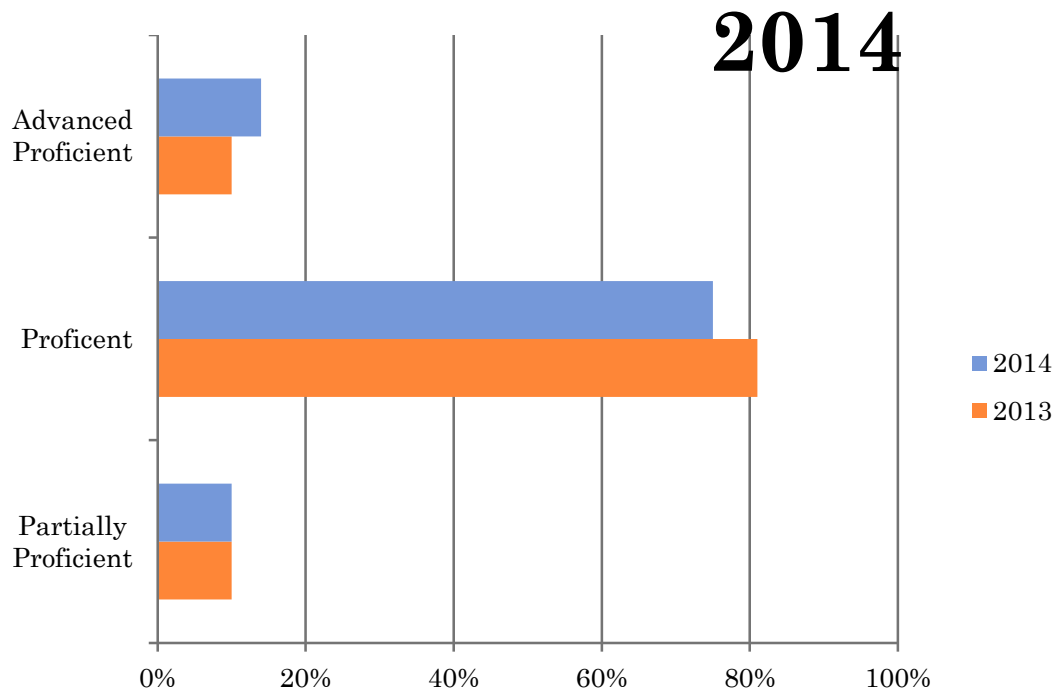
- Hired HQ ELA 4th grade teacher
- Moved to online assessments utilizing LinkIt and Google
- Teachers are implementing PARCC like assessments
- STAR Assessments for ELA and Math in K-3, to assist with progress monitoring
- Utilizing IXL to target areas of need and allow for advanced students to improve
- Implemented advanced 7th grade Pre-Algebra class



2014 HSPA ELA RESULTS

Partially Proficient	Proficient	Advanced Proficient
10%	75%	14%

ELA HSPA Comparison Between 2013 and



- Percentage of Advanced Proficient scores increased

- All students met their HSPA graduation requirement

2011 NJASK ELA vs. 2014 HSPA ELA (COMPARING THE SAME SET OF STUDENTS)

2011
NJASK
ELA

- 16/83 students were Partially Proficient
- 64/83 Students were Proficient
- 3/83 Students were Advanced Proficient

2014
HSPA
ELA

- 7/83 Students were Partially Proficient
- 65/83 Students were Proficient
- 11/83 Students were Advanced Proficient



WHAT DOES THAT SHOW?

**Partially
Proficient**

19% in 2011
to 8% in
2014

Proficient

77% in 2011
to 79% in
2014

**Advanced
Proficient**

4% in 2011
to 13% in
2014

88% of all students IMPROVED in ELA

HSPA MATH

Math section includes:

- Numbers and Numerical Operations
- Geometry and Measurement
- Patterns and Algebra
- Data Analysis, Probability, and Discrete Mathematics



HSPA MATH COMPARISON

2012-13

Partially Proficient:

$$36/112 = 32.1\%$$

Proficient:

$$62/112 = 55.4\%$$

Advanced Proficient:

$$14/112 = 12.5\%$$

2013-14

Partially Proficient:

$$37/99 = 37.4\%$$

Proficient:

$$52/99 = 52.5\%$$

Advanced Proficient:

$$10/99 = 10.1\%$$



HSPA MATH COMPARISON TO 8TH NJ ASK (SAME STUDENTS)

8th NJ ASK

Partially Proficient:

$$41/82 = 50\%$$

Proficient:

$$32/82 = 39\%$$

Advanced Proficient:

$$9/82 = 11\%$$

2013-14

Partially Proficient:

$$37/99 = 37.4\%$$

Proficient:

$$52/99 = 52.5\%$$

Advanced Proficient:

$$10/99 = 10.1\%$$

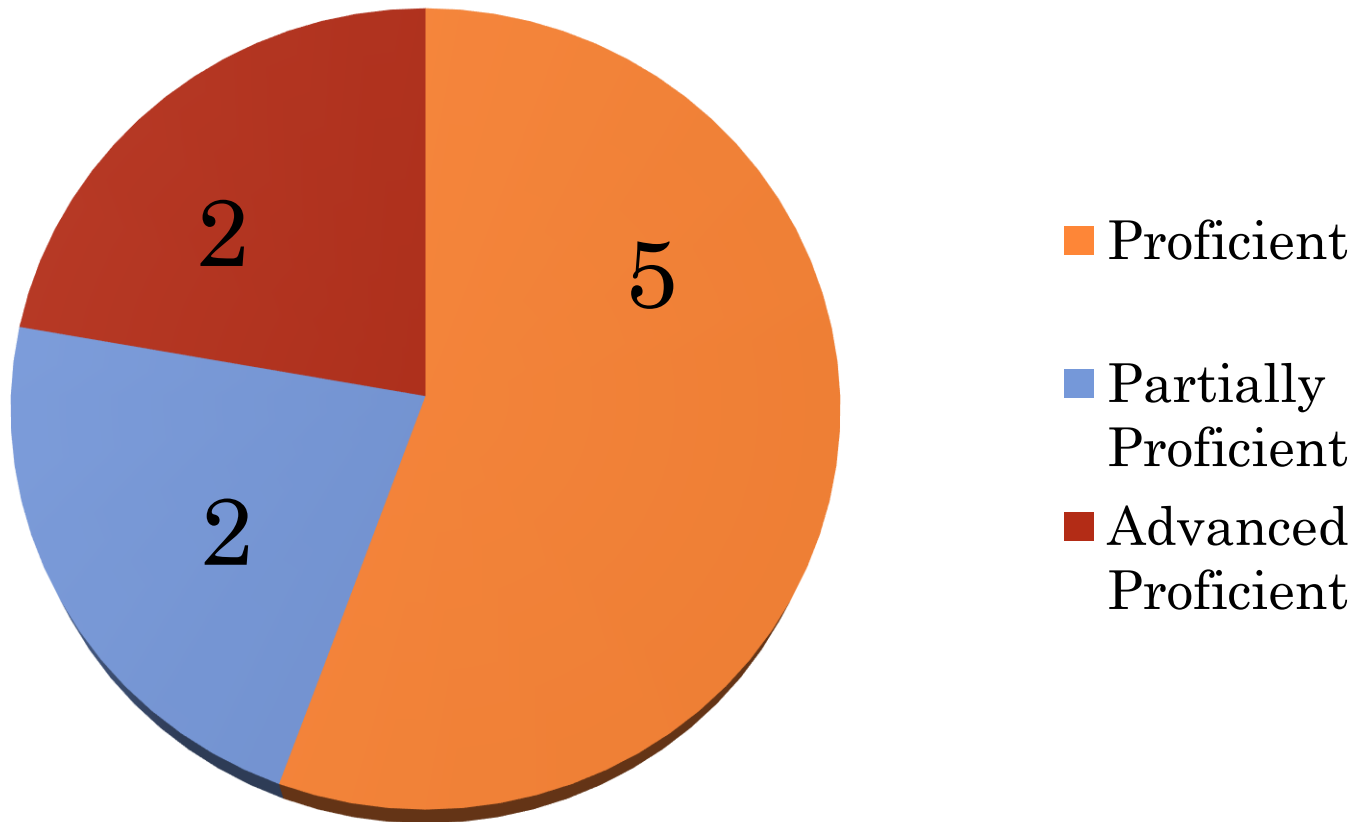


NEXT STEPS...

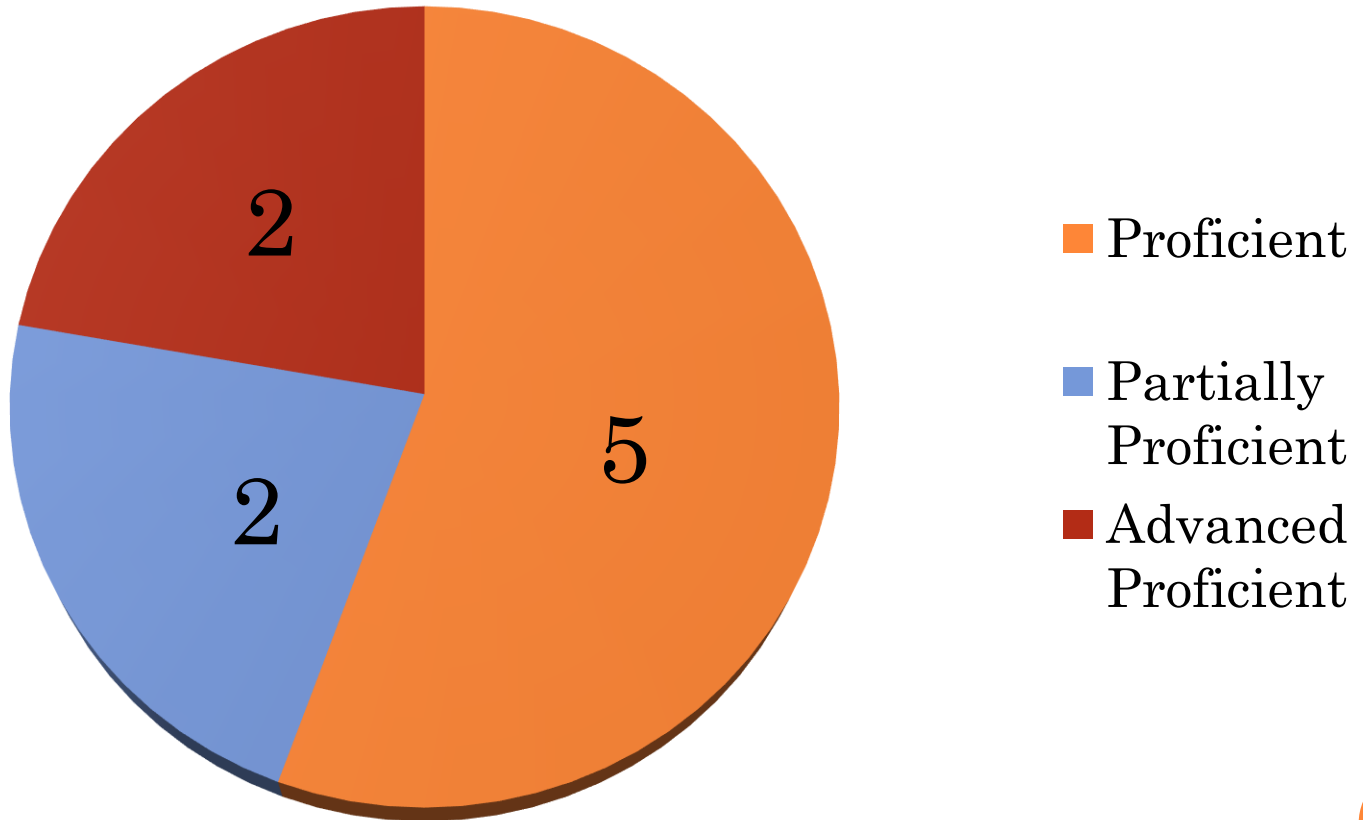
- Revised current Algebra I and Geometry curriculum
- Revised Algebra IA curriculum
- Created Algebra and Geometry Enrichment curriculum
- Utilizing IXL to target areas of remediation
- Implemented SAT/ACT Prep class to assist with building upon foundational skills
- Creating a cohort of teachers to select and adopt new mathematical textbook series
- Training teachers on Google and PARCC



APA ELA 2014 SCORES



APA MATH 2014 SCORES



DYNAMIC LEARNING MAPS

THE NEW ALTERNATE PROFICIENCY ASSESSMENT

- Multi-state consortium that's developed a new type of computer – based alternate assessment;
- Designed to measure what students with severe cognitive disabilities know and can do;
- Learn academic content aligned to grade level standards, but at reduced depth, breath, and complexity;
- Content standards (college and career readiness standards) are called **Essential Elements (EE)**;
- EE are the learning targets for the assessments for grades 3-12 in ELA and Math.
- Learning Maps are highly connected representations of how academic skills are acquired.
- 2014-15 – DLM for ELA and MATH but APA for Science in grades 4 and 8 and End of Year Biology in HS.

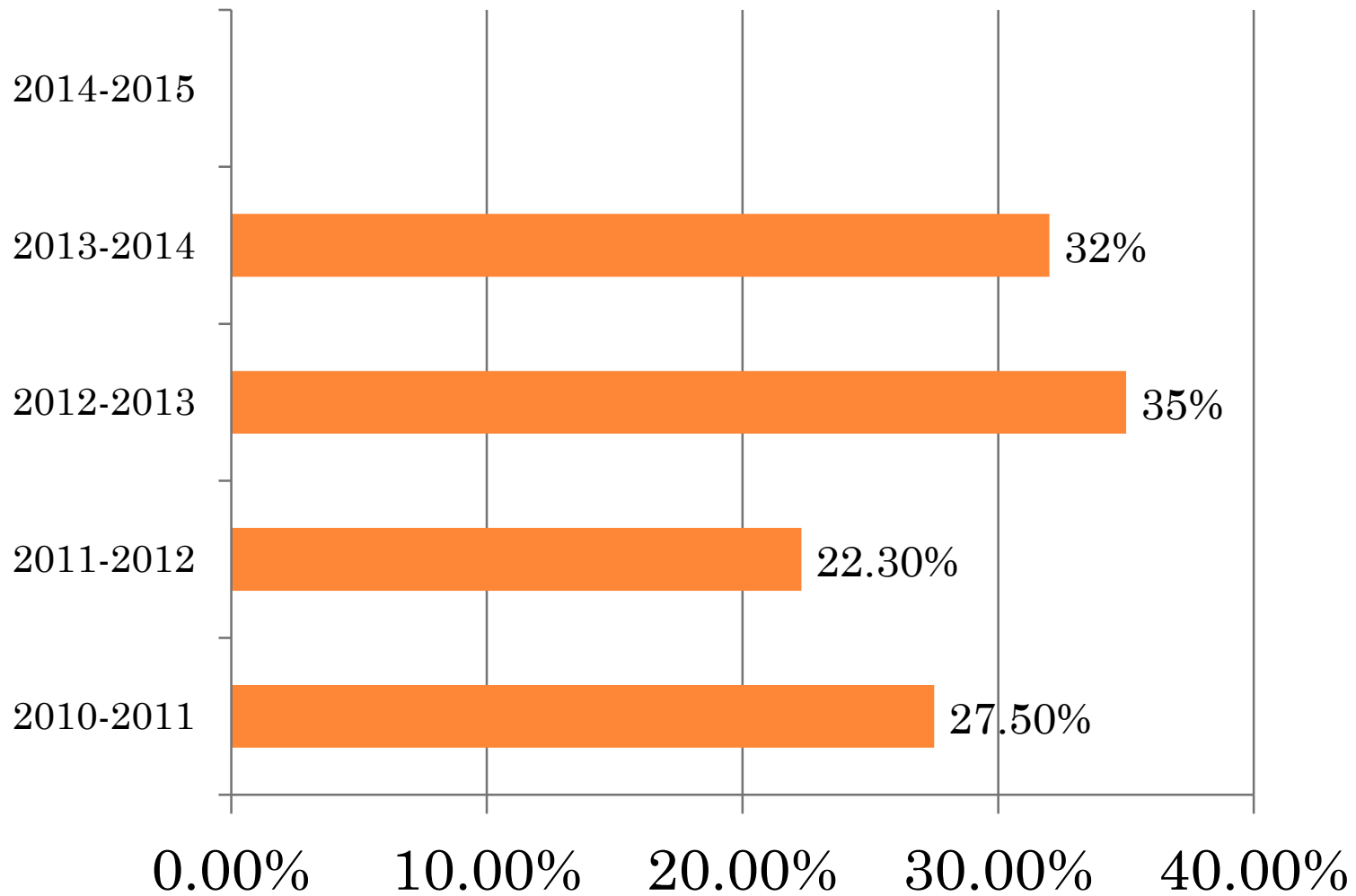


CLASS OF 2014 POST-SECONDARY PLANS

- 2 Year College 47%
- 4 Year College 44%
- 4 Year College Acceptances 348
- Military 5%



2014 Advanced Placement Exams



Percentage of students who scored a 3+



2014 Advanced Placement Exams

Year	Number of Students Enrolled	Number of Students who scored 3+	Percentage of students of who scored 3+
2010-2011	58	16	27.5%
2011-2012	85	19	22.3%
2012-2013	103	37	35%
2013-2014	59	19	32%
2014-2015	44		



NEXT STEPS...

- Ran a Summer AP Bootcamp Program
- Participate in the Monmouth County AP Consortium for English
- Hosted AP Consortium for science
- Revised Honors ELA 9-11 curriculum to incorporate College Board's Spring Board Curriculum
- Allow for flexible AP Criteria in order to have more students exposed to the rigorous AP level course
- Pay for AP Exam so ALL students enrolled in the classes can take the test
- Revised syllabi and received College Board approval
- Strengthening our dual enrollment program with Brookdale by looking to run a Psychology class in the summer



MOVING TO PARCC

English Language Arts

Complexity: Practice with complex text and academic language

Knowledge: Building knowledge through content-rich non-fiction

Evidence: Reading, writing, and speaking grounded in evidence, both literary and informational.

Math:

Focus: Greater focus on deeper instruction, strong foundational skills, procedural fluency.

Coherence: Coherent progression across grades linked to authentic topics.

Rigor: pursue understanding, procedural fluency, and application with rigor.



MOVING TO PARCC

- Completed the Infrastructure Readiness Trial in March 2014 successfully
- Completed all the assigned field tests of PARCC in Spring 2014 successfully
- Ordered all necessary technology hardware needed for PARCC Administration
- Created Assessments that mimic the PARCC so students can practice and work successfully in a digital yet rigorous format



CHANGE IN SCORING – WHAT ARE PERFORMANCE LEVEL DESCRIPTORS?

Performance Level Descriptors or PLDs describe what students at each performance level know and can do relative to the grade-level or course content standards assessed.



PARCC ESTABLISHED 5 PLDs

- Level 5: Students performing at this level demonstrate a **distinguished** command of the knowledge, skills, and practices embodied by the Common Core State Standards assessed at their grade level.
- Level 4: **Strong** command...
- Level 3: **Moderate** command...
- Level 2: **Partial** command...
- Level 1: **Minimal** command...




SAMPLE OF GOOGLE DOC CREATED TO SIMULATE PARCC

Grade 7- Counting on Grace

Welcome! You are about to start a test.

To answer the questions on this test, you will first be asked to read one or more passages. Read each passage and question carefully and then choose the **best** answer for each question. You may look back at the passage or passages as often as necessary.

Continue »

Powered by
 Google Forms

This form was created inside of Keyport School District.
[Report Abuse](#) - [Terms of Service](#) - [Additional Terms](#)



SAMPLE RESPONSE FORM

Inbox (6247) - Yahoo Mail x Shared with me - Google x Grade 6: (Responses) Counting on Grace x Yahoo Mail

https://docs.google.com/a/kpsdschools.org/spreadsheets/d/1dY5c_IsulTjpe1JdSkuAf1ncb4_wOWhoygNu-YgsqE/edit#gid=126938259

Grade 6: (Responses) Counting on Grace ☆

File Edit View Insert Format Data Tools Form Add-ons Help Last edit was made on July 21 by Mary Anne Ricca

lgodlesky@kpsdschools.org

Comments Share

fx | Timestamp

	A	B	C	D	E	F	G	H
1	Timestamp	Name:		1 2a	2b		3 4a	4b
2	7/21/2014 11:36:31	Answer Key	A. not well liked	A. He worries that Grace may reveal that Miss Lesley helped write the letter.	D. "You'd better not tell."	C. Now Grace understands why Arthur and Miss Lesley are writing the letter.	D. Child labor is wrong and should be stopped.	B. Children should be spending time in school instead of working. D. Having so many children working at the mill makes accidents more likely.
3								
4								
5								
6								
7								
8								
9								
10								
11								
12								
13								
14								
15								
16								
17								
18								
19								
20								
21								
22								
23								
24								
25								
26								
27								
28								
29								
30								

Form Responses 1

11:48 AM 8/25/2014



IMPORTANCE OF PARCC LIKE ASSESSMENTS

- Students practice utilizing technology when taking assessments
- Students can hone their keyboarding skills by practicing typing long written responses
- Helps ensure that PARCC tests their ELA and Math ability, not their technological savviness
- Google Forms allows teachers to quickly assess student achievement



2014-2015 PARCC ASSESSMENT SCHEDULE

Assessment	REGULAR TESTING	MAKE-UP ADMINISTRATION
PARCC PBA (3-11)	March 2nd - March 27th	
PARCC EOY (3-8)	April 27th - May 22nd	
PARCC EOY (9-11)	April 20th - May 15th	
NJASK 4 & 8 Science	May 27th	May 28th



2016-2018 TESTING HIGH SCHOOL GRADUATION REQUIREMENTS

- Must pass PARCC ELA and Math
 - Must pass either ELA 9, 10, or 11
 - Must pass either Algebra I, Geometry, or Algebra II

- Alternate Options
 - SAT – Critical Thinking/Math 400
 - ACT – Reading or Math 16
 - ASVAB-AFQT Score 31
 - Accuplacer- Writing 8
 - Accuplacer Math – Elem. Math 76



2014-2015 DISTRICT GOALS

- Goal 1: To improve student achievement, by reaching all learners, through data analysis and targeted instructional planning.
- Goal 2: To increase communication in order to promote student recognition and maximize awareness as well as support of the Keyport Public Schools' District goals, objectives, and programs
- Goal 3: To support a culture that promotes student achievement through a cohesive teacher and administrator evaluation system that meets the needs of the school community



MOVING INTO 2014-2015

- Strategic Planning
 - Professional Learning
 - PARCC Training for teachers
 - Google Cohorts for teachers
 - After-School PD Academy
 - Leadership
 - FEA Leadership Academy
 - Administrative Goals



PARENT RESOURCES

- Frequently Asked Questions
- PARCC Fact Sheet
- Parent's Guide to the Common Core K- HS

